

**MARIN COUNTY PERSONNEL COMMISSION  
Special Meeting**

**November 28, 2012  
Conference Room 410B**

**Agenda**

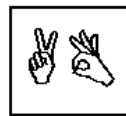
- 9:30 a.m. 1. Approve Agenda
- 9:32 a.m. 2. Open Time for Items not on the Agenda
- 9:35 a.m. 3. Rescheduling of Examination Appeal EA13-01, Edward Contreras
- 9:40 a.m. 4. Scheduling of Discipline Appeal D13-01, Dolores Reta
- 9:45 a.m. 5. Preliminary Hearing – Examination Appeal EA13-02, Martha Rojas
- 10:15 a.m. 6. Equal Employment Advisory Committee – Applicant Review and Selection
- 10:30 a.m. 7. Discussion of PMR 3

*Agenda items will be heard at the time specified or later,  
depending on the progress of the meeting.*

**AGENDA DISTRIBUTION:**

Joanne Peterson, Human Resources  
Angela Nicholson, Human Resources  
Carrie Ann Colton, Human Resources  
Florence Pattison, Human Resources  
Diane Ooms, Human Resources  
Sondra Lewis, Human Resources  
Jack Govi, Acting County Counsel  
Sheila Lichtblau, County Counsel  
Katie Gaier

David Zaltsman, County Counsel  
Jose Varela, Public Defender  
Martha Rojas, Public Defender  
Barbara Kob, MAPE  
Edward Contreras  
Board of Supervisors  
Department Heads  
Personnel Commissioners  
Nels Johnson, Marin IJ



All County public meetings are conducted in accessible locations.  
If you require this document in an alternate format (example: Braille, Large Print, Audiotape, CD-ROM) or if you require American Sign Language interpreters, assistive listening devices or other accommodations to participate in this meeting, please call (415) 473-6172 (TDD) or (415) 473-6104 (TDD and Voice) or send email to [bbarry@marincounty.org](mailto:bbarry@marincounty.org) as soon as possible but at least 72 hours in advance.  
Copies of documents used in this meeting are available in accessible formats upon written request.  
Late agenda material can be inspected in the office of the Executive Secretary to the Commission, between the hours of 8:00 a.m. and 5:00 p.m. weekdays in Room 415 of the Marin County Civic Center, 3501 Civic Center Drive, San Rafael.